

Figure S49

29 October 2013

800I nozzles

MOUT South and nearby road Transect.

Droplet density (uncorrected) on 1/8-in spinning rods mounted on FLB spinners, in droplets per mm².

Note value of 33.62 in red with a black background to distinguish the FLB spinner located on a rooftop. All other values in red (with white background) represent FLB spinners at ground level.

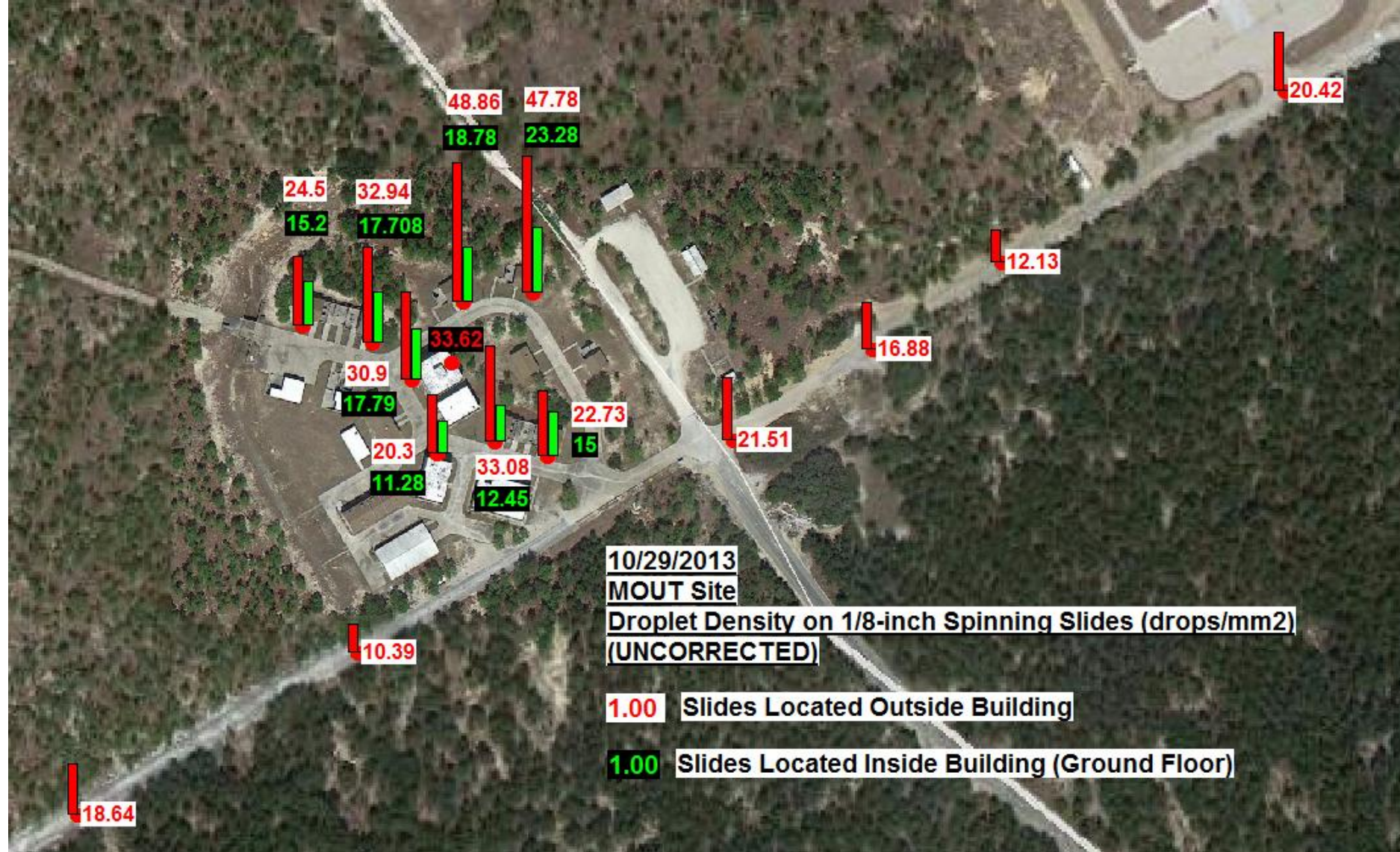


Figure S50

29 October 2013

8001 nozzles

MOUT South and nearby
road Transect.

Droplet density
(uncorrected) on 1/8-in
spinning rods mounted on
outdoor FLB spinners, in
droplets per mm²,
represented as a 'heat map'
to approximate transitions
among values at point
measurement locations.

